



# F 20



Capacity  
**20 T**



Boom Height  
(With Fly Jib)  
**21.8 M**



Snatch Block  
**15 T Lifting**



Creep Speed  
**1.3 kmph**



Axle  
**Heavy Duty**

Contact : 9300723311



SPECIFICATIONS

Contact : 9300723311

**RATED CAPACITY**

20 Tonnes at 1.5 m radius  
900 kg at 16 m radius  
Max Height 19.5 m  
SWL based on 85% stability & strength (IS 4573)

**VEHICLE PERFORMANCE**

Speed Max 40 kmph  
Creep Speed 1.3 kmph

**DRIVE**

2 Wheel Drive optional 4 Wheel Drive

**ENGINE (BS IV)**

Volvo - Eicher make CEV BS IV Diesel Engine, Model E494TCI - High Pressure Common Rail System (HPCR) Technology, Turbo Charged Water Cooled, ECU Control Engine Management System, Developing 74 Kw/101HP @ 2200 RPM or Equivalent Engine.

**CLUTCH (HYDRAULIC)**

Single, dry type friction clutch plate  
Low effort hydro pneumatic clutch

**BRAKES**

2WD - Service Brakes Fully air operated brakes on front wheels, pneumatically assisted hydraulic brakes on rear wheels.

Parking Air operated, spring actuated, fail safe brakes on front wheels. Pneumatically assisted, spring loaded, fail safe, hydraulically actuated brakes on rear wheels.

4WD - Service Brakes Fully air operated brakes on front and rear wheels.

Parking Air operated, spring actuated, fail safe brakes on front and rear wheels.

**TYRES**

8 nos.-12 x 24-20 PLY

**HYDRAULIC SYSTEM**

Main Pump Tandem Hydraulic vane pump main  
Control valve Main control valve 3 spool double acting with a built in relief & auxiliary valves

Outrigger 2 Spool  
Control valve Double acting type

**STEERING**

Full power orbitrol with twin hydraulic double acting rams  
40° articulation on either side

**TRANSMISSION**

VECV make Synchromesh Gearbox.  
Auxiliary gearbox for high & low range.



**AUXILIARY GEARBOX**  
Specially designed AGB developing lowest creep seed & high torque

**AXLES**

Front Heavy duty rigidly mounted front wheel drive axle  
Rear Mounted with semi-elliptical springs



**HEAVY DUTY AXLE**  
Heavy duty 37.3 ton hub reduction axle for heavy load applications

**ELECTRICAL SYSTEM**

24V, DC

**BOOM**

4 parts boom, 3 parts hydraulically powered & fully synchronized, 4<sup>th</sup> part power extended & manually pinned for safety

**HOIST**

15T hydraulically operated with 6 falls Built in safety brakes

**WHEEL BASE**

4880 mm

**DIMENSIONS**

Overall Length 10900 mm  
Overall Width 2700 mm  
Overall Height 3300 mm

**WHEEL TRACK**

Front 1960 mm  
Rear 1960 mm

**OPERATING WEIGHT**

Front Axle 9275 kg  
Rear Axle 10200 kg  
Total 19475 kg

**TURNING RADIUS**

7.85 m

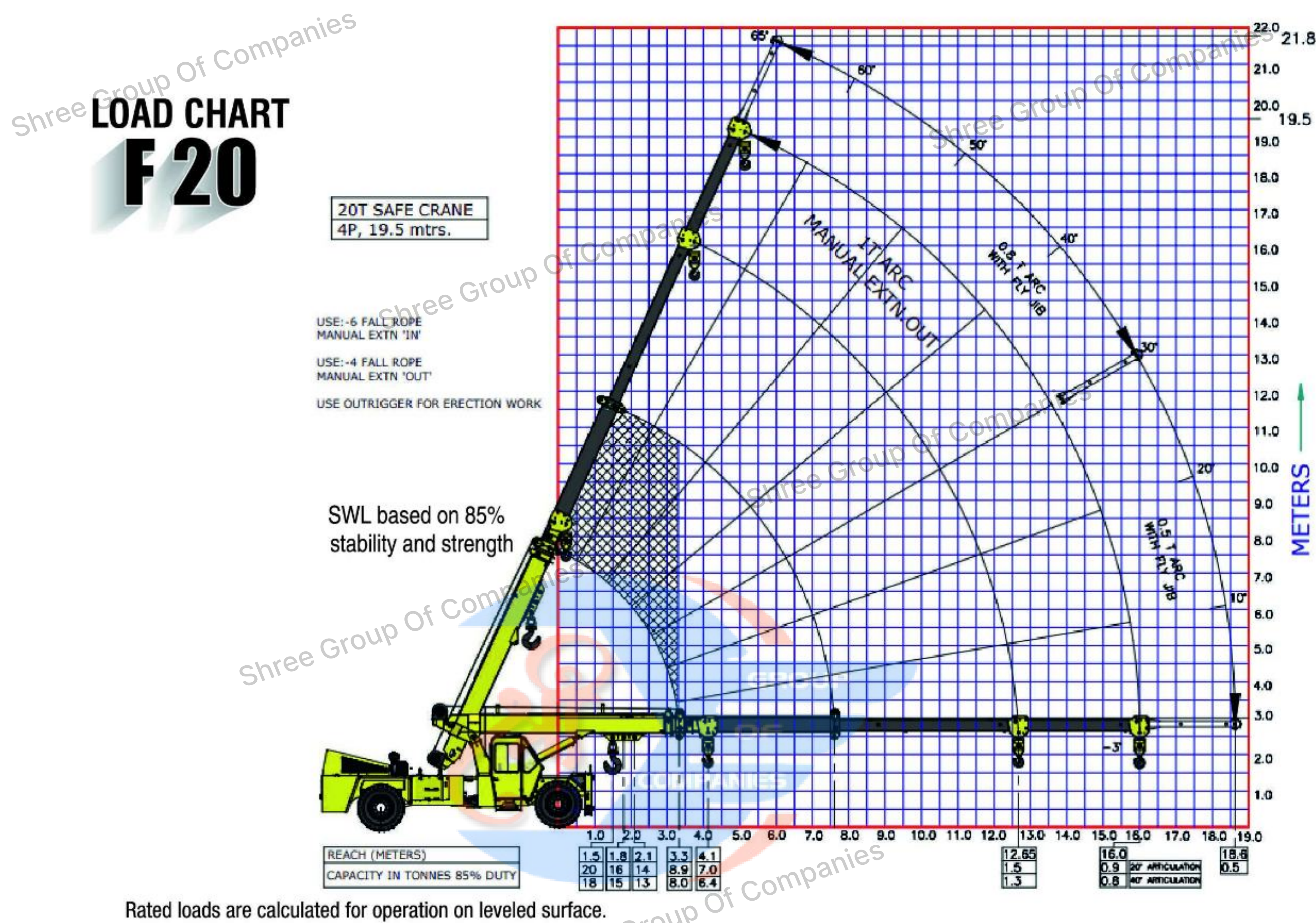
**STANDARD ACCESSORIES**

All Weather Cabin with Unrestricted Visibility  
Rear View Camera with LCD  
Equipment Monitoring System (telematics)  
Front Outriggers  
Wheel Guards  
FM Radio and Mobile Charger  
Battery Cut off Switch

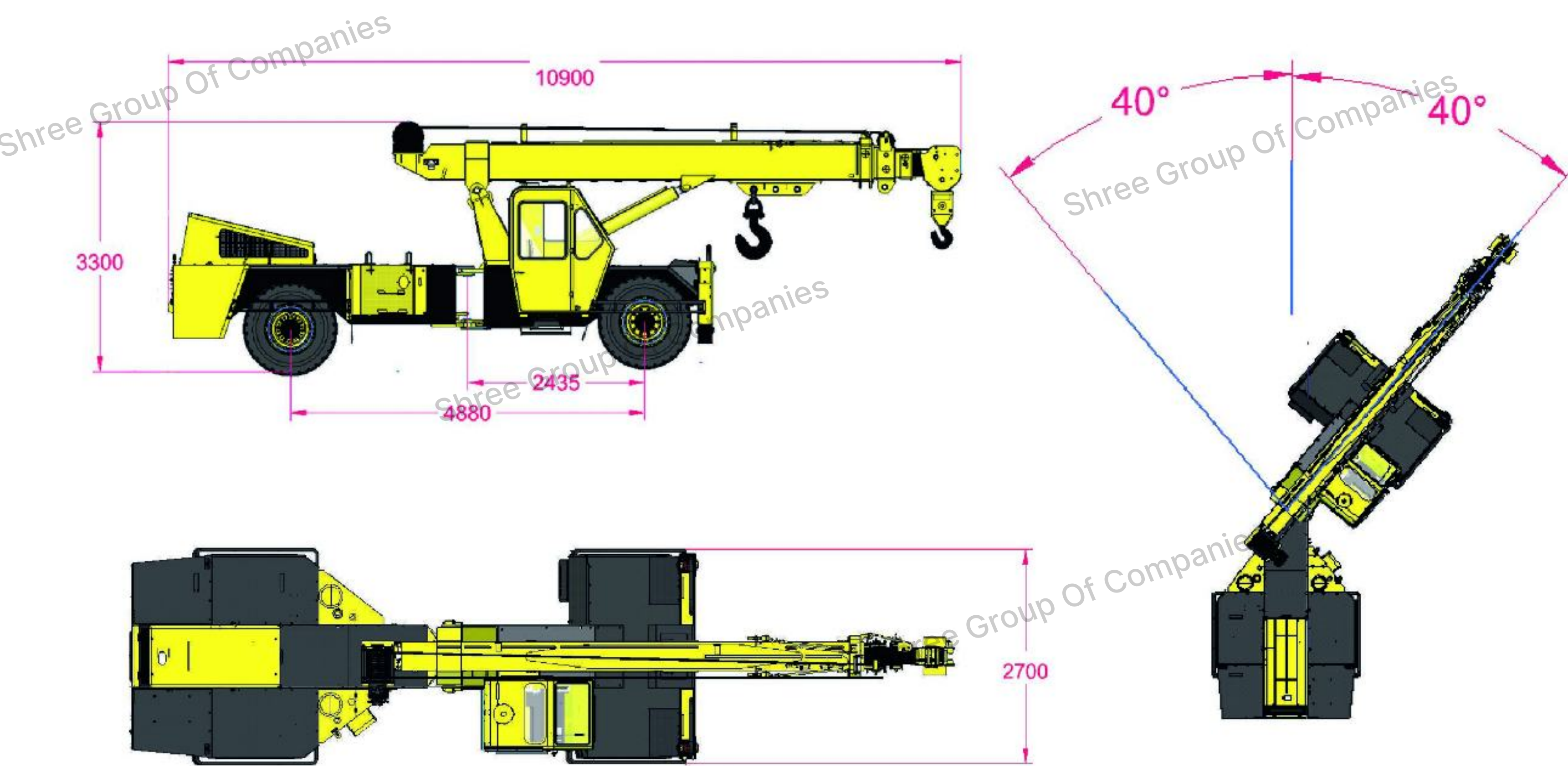
**OPTIONAL ACCESSORIES**

Safe Load Indicator with Hydraulic Cut Off  
Air Conditioned Cabin, Man Carrying Basket  
Fire Extinguisher  
Fly Jib  
Beacon Light  
Pilling Application  
Spreader Bar  
Helper Seat Platform





**F20: DIMENSIONS (Ref.) & AREA OF OPERATION**





Contact : 9300723311

## FEATURES



### HYDRAULIC CLUTCH

Low effort hydro pneumatic clutch to reduce operator fatigue.



### ELECTRONIC ACCELERATOR PEDAL

**Accelerator Pedal** - Low effort electronic accelerator pedal reduce operator fatigue.



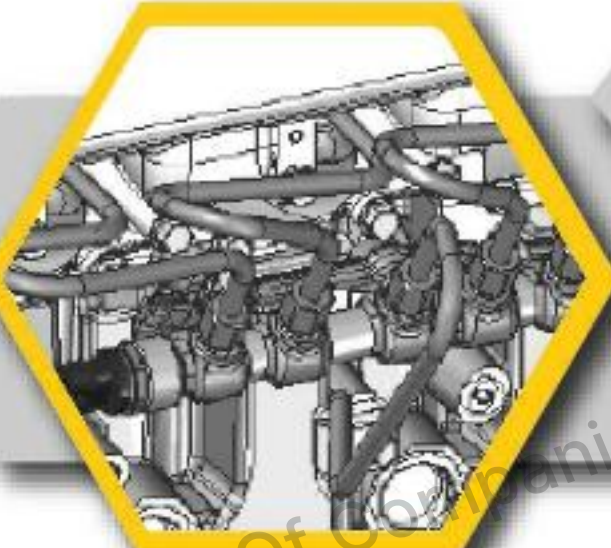
### ECU EMS SYSTEM

**ECU EMS** – Electronic Control Unit for Engine Management System for Engine diagnosis and troubleshoot.



### IGNITION ON/ OFF

Ignition key to switch off engine, no more use of stop cable to engine put off.



### HPCR SYSTEM

**HPCR** – High Pressure Common Rail System - HPCR provide cleaner exhaust, deliver more horsepower and fuel efficiency per displacement.



### ROCKER SWITCHES

Rocker Switch with more reliable and better aesthetic appearance, low operator fatigue.



### CLUSTER

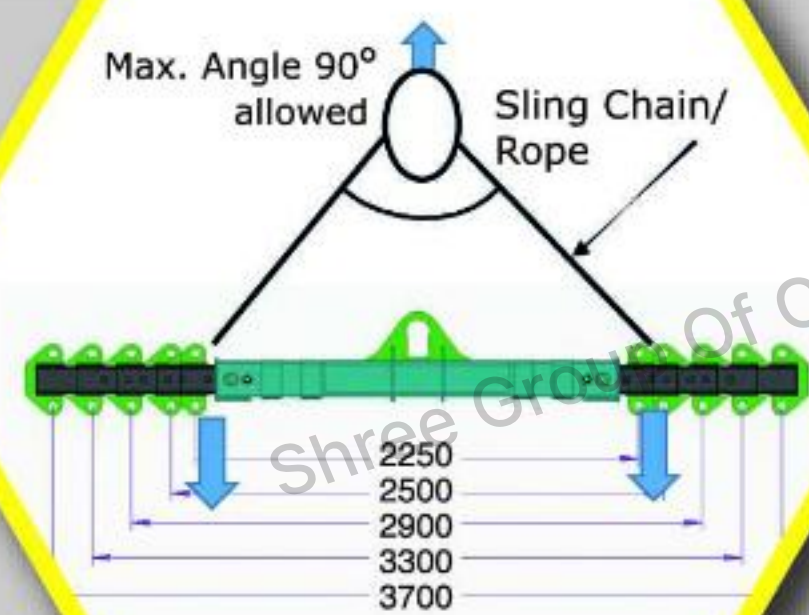
Single Digital Cluster with all gauges, fault code detection for engine system, date and time display feature, less number of wiring harness.

\*Photo may be change w.r.t actual in equipment



Contact : 9300723311

## ACCESSORIES



### SPREADER BAR CUM LIFTING BEAM

Spreader Bar is used to aid crane operators in picking up large and sometimes heavy loads. It increase the stability and handling of load during hoisting and traveling with load.

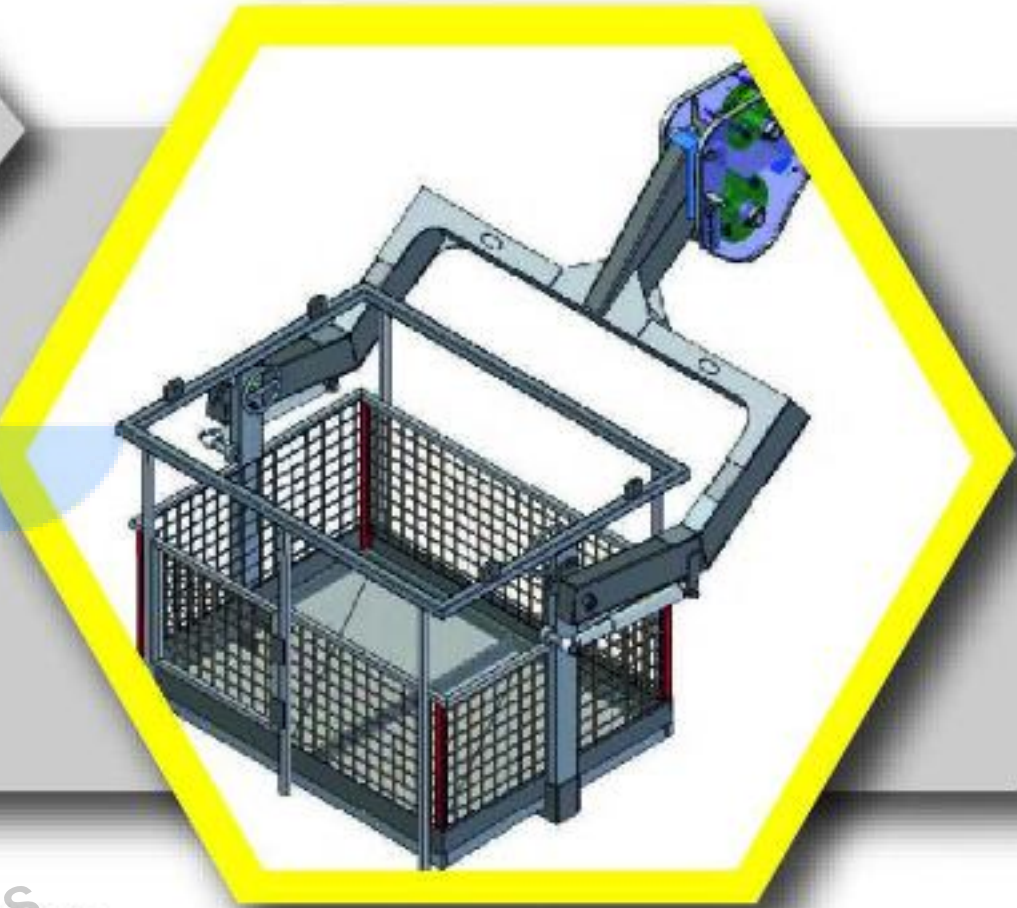
Lifting Capacity- 5 Tonnes to 15 Tonnes  
(depending on the crane load chart)  
Beam Expend Range: 2250 mm to 3700 mm

**Note:** Attachment view is for ref. only. Physical part may be differ from provided.

### MAN CARRYING BASKET

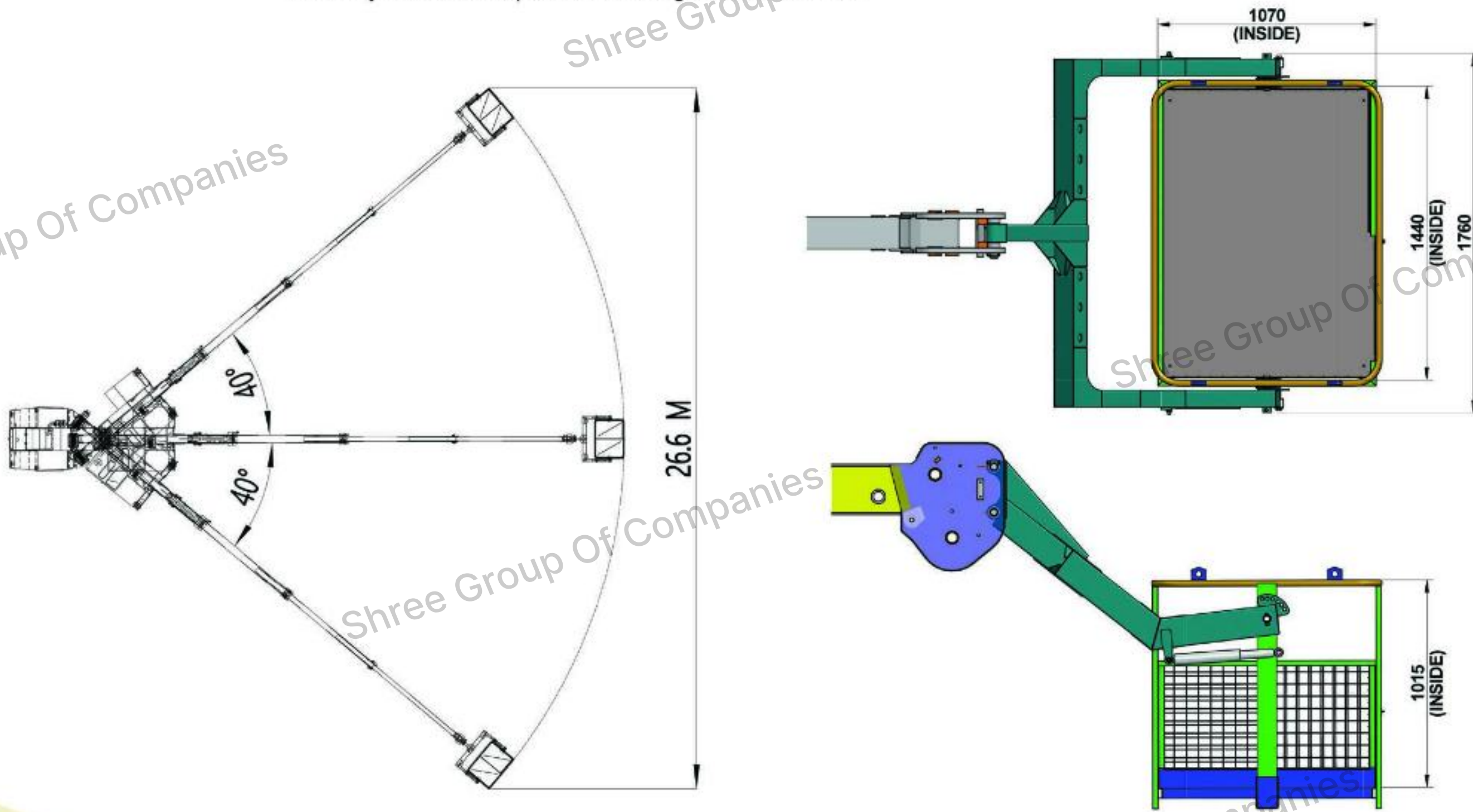
ATTACHMENT SPECIFICATION		
ATTACHMENT WEIGHT	KG	240
MAX. CAPACITY	KG	235
NO. OF PERSONS.	N*	2
PLATFORM LENGTH	mm	1440
PLATFORM WIDTH	mm	1070

**Intended use**  
The machine has been designed to lift people and handle small tool, max load 235 kg or 2 persons



#### BE CAREFUL!

When in the firm the same machine is to be used by more than one operator, working instructions as well as the use and maintenance manual must be conveyed to all the operators in charge of the machine.

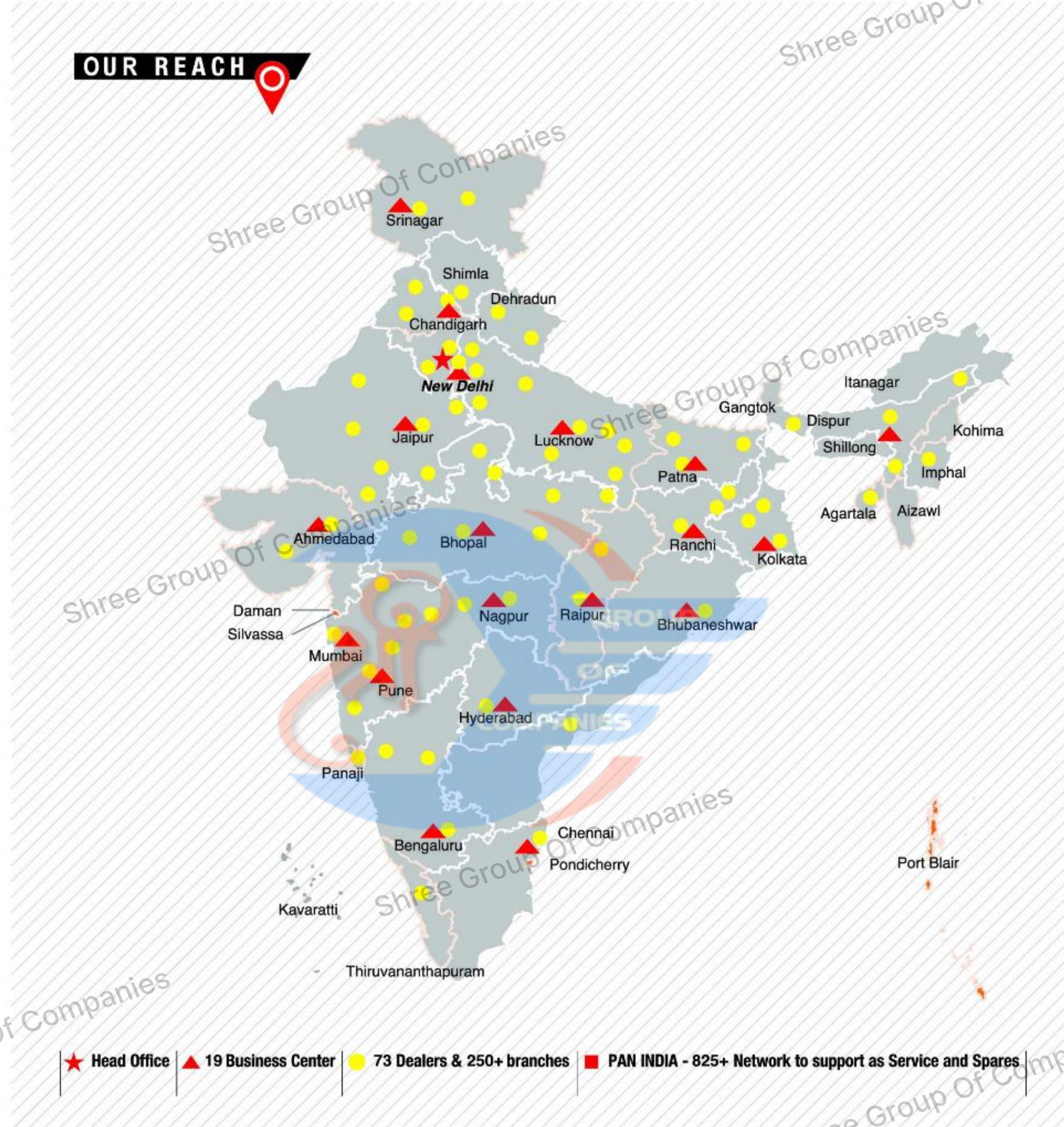


ATTACHMENT DIMENSIONS





OUR REACH



**Toll Free No.:**  
**1800- 180- 4488**  
(Timings: 9.30 am - 6.00 pm, Monday to Friday)

e-mail: [ece.help@escorts.co.in](mailto:ece.help@escorts.co.in)

Escorts Construction Equipment: Plot No. 219, Sector- 58, Ballabhgarh- 121 004, Faridabad, Haryana (INDIA) Tel.: 0129-2306574/2306598/2306571 Fax: 0129-2306572 Website: [www.escortsgroup.com](http://www.escortsgroup.com)

Authorised Dealer

Contact : 9300723311

(Accessories as shown in the picture may not be the part of standard fitment and are subject to change without prior notice.)

MKT/21.1/F 20